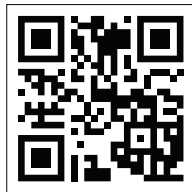




uPVC SolaGlaze



www.Naturalight.co.uk



Solaglaze

The Naturalight Solaglaze is a modern sleek solution for flat glass rooflights, suitable for residential and commercial applications. Due to the frame being made from uPVC, the rooflight is resistant to all weather conditions and requires minimal maintenance.

This product is suitable for most commercial and residential applications where the increase of natural light is desired.

The Solaglaze product is generally installed to a builder's upstand suitable for flat or pitched roof's on a pitch between 5 and 60 degrees. Once in place, it's easily secured using the supplied colour co-ordinated angle brackets, which can be hidden behind the plasterboard.

On larger bespoke size's Naturalight offer an installation service, in this instance the framework is fixed directly to the upstand and glazed in situ.

Carrier Frame

Low-Level Maintenance

Available in Both Anthracite Grey or White

Multi-Chambered Thermally Efficient uPVC Frame

Fire Rating - Classification to EN 13501-1 - B-s2 d1

Glazing Unit

Double Glazed Toughened Glass With Warm Edge Spacer

'U' Value Ug 1.3 W/(m2.k)

Light Transmittance (TL) 71%

Solar Factor (g) 0.51

Additional glazing coating options include 'solar control', 'self-cleaning' & 'blue body tint'

The 'self-cleaning' coating requires a minimum of 10 degree pitch

Standard Sizes

Solaglaze rooflights are available in the following standard stock sizes -

-600mm x 600mm

-750mm x 750mm

-900mm x 900mm

-1000mm x 1000mm

-1000mm x 1500mm

-600mm x 900mm

-600mm x 1200mm

-900mm x 1200mm

-1200mm x 1200mm

-1000mm x 2000mm

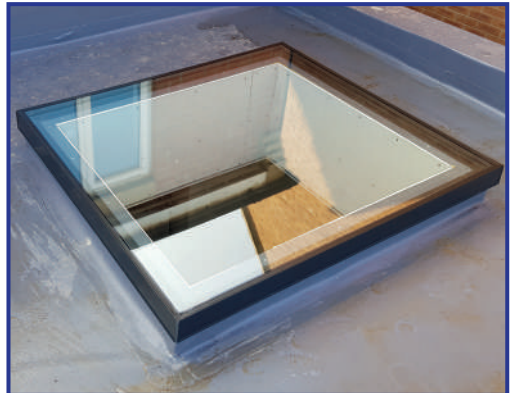
All sizes shown are supplied in 1No. Pane of glass.

Multiple bays available on larger bespoke rooflights

Note - sizes shown are weathered overall upstand sizes.

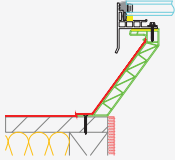
Bespoke sizes are also available, contact for a tailored quote.

Contact office for current stock levels and availability

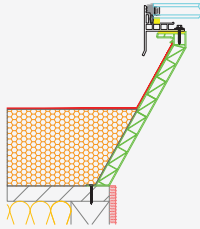


uPVC Kerb Options

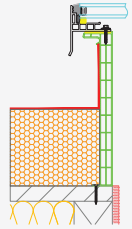
The Naturalight Solaglade can also be supplied with a high quality extruded white uPVC kerb in the following variations.



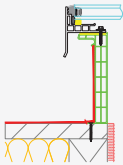
168mm High Splayed Kerb with
100mm Splay and 60mm Base Flange.
2.05 W/m² U-value.



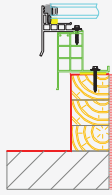
300mm High Splayed Kerb with
150mm Splay and 45mm Base Flange.
2.65 W/m² U-value.



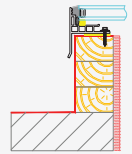
300mm High Vertical Kerb and
40mm Base Flange.
2.76 W/m² U-value.



175mm High Vertical Kerb
and 40mm Base Flange.
2.42 W/m² U-value.



80mm High Security Adapter Kerb
with a 100mm Base Flange.
1.87 W/m² U-value.

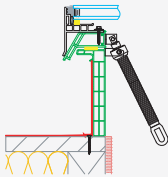


Solaglade Product Fixed Directly
To Builders Kerb / Upstand.

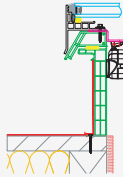
uPVC Kerb Ventilation Opening Options

The Naturalight Solaglade can also be supplied with various ventilation options as shown below

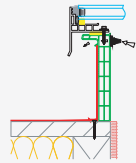
Note - uPVC kerb example shown is the 175mm vertical. Ventilation options available on all Naturalight uPVC kerbs.



Wormgear Manual Opener.
Operated Using Extension
Pole (Sold Separately)



230v Chain Actuator For Day To Day
Ventilation.



Titan Hit and Miss Vents to
2No. or 4No. Sides.

www.Naturalight.co.uk



NaturaLight
Systems
Ltd



Accessory House, Barrington Industrial Estate,
Bedlington, Northumberland, NE22 7DQ

www.Naturalight.co.uk
Tel: 01670 530333
Fax: 01670 824540

